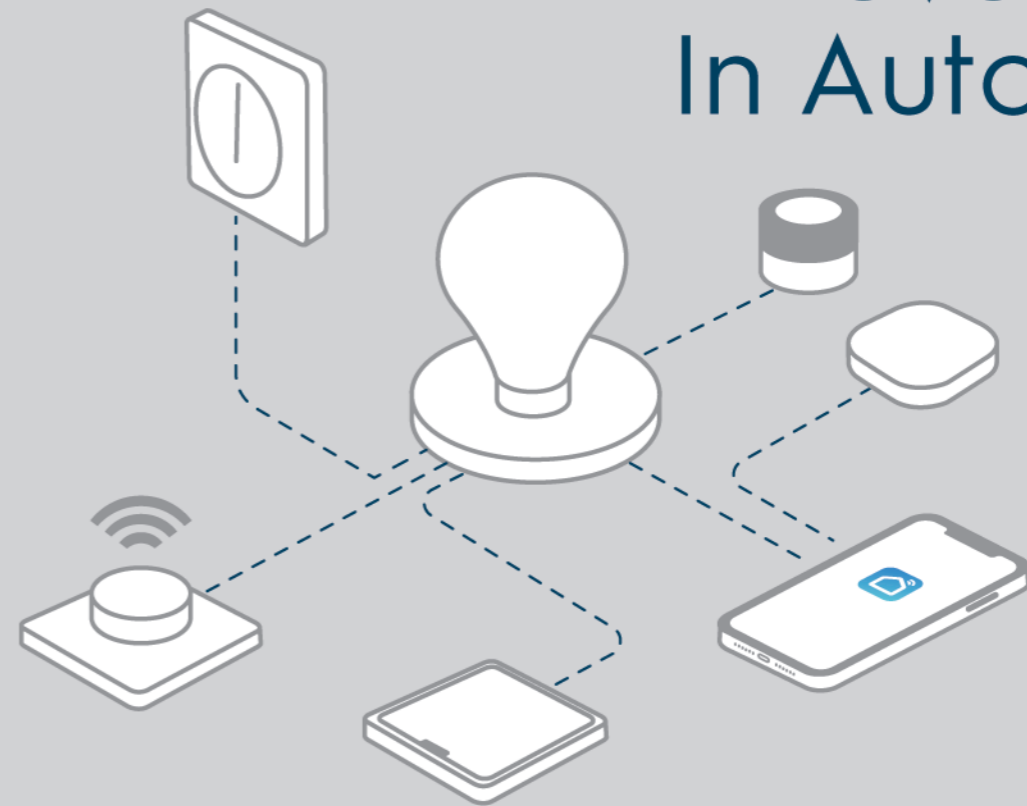


Innovation In Automation

2021 Catalog



Company Name:Earda Technologies Co., Ltd.
Address:(Workshop A), No. 2, Jisheng Road,
Huangge Town, Guangzhou,
Guangdong, China
Website : <http://www.eardatek.com>
Phone: +86-20-28662868

EARDATEK
Stock Code: 870780

ABOUT EARDATEK

2021

Smart Breaker
Smart Button
Smart knob
Without Neutral Switch

2019

Completed The First Product Development,
Certification And Shipment

2017

Stock Code 870780
Eardatek Has Been Listed On New Otc Market

1999

Eardatek Was Founded

2020

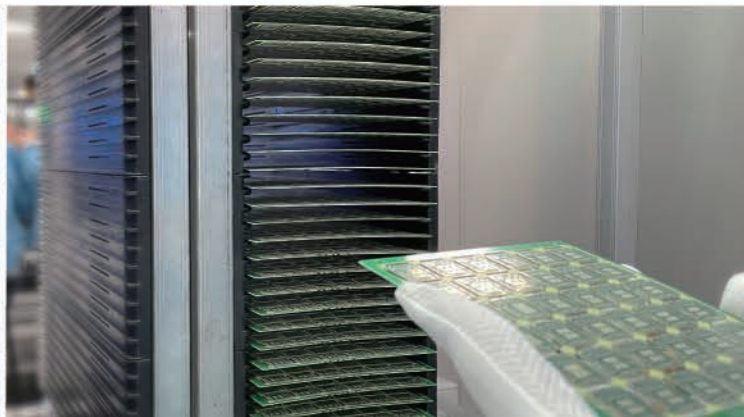
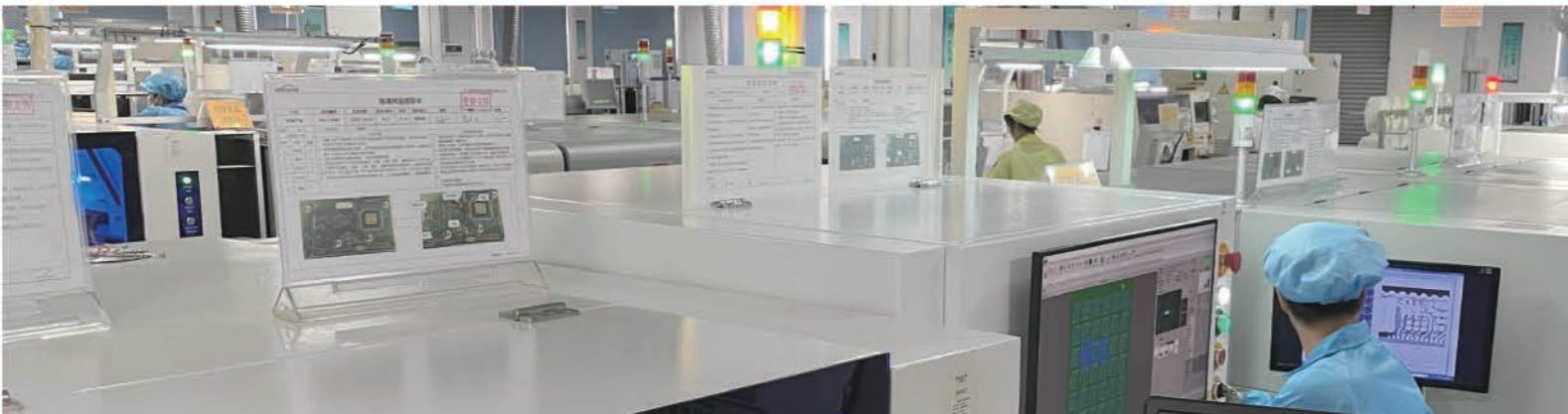
Completed Shipment Over 700k Pcs
EU/CN Series Products

2018

IoT Business Unit Established

2015

Extend Facilities Area To 13000 m²



EU



EU Standard



Smart Switch



1 GANG

2 GANG

3 GANG



Neutral Required
(3 Wires)



Voice Control



Group Control



App Remote Control



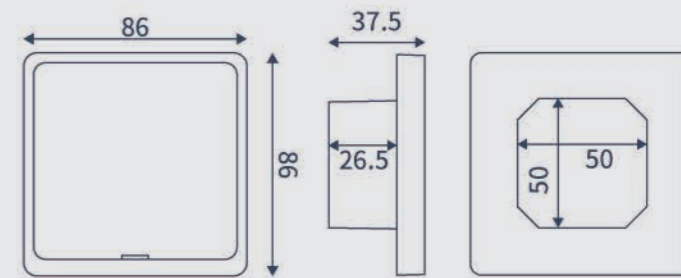
Dual Color Indicate LED



Mechanical ON/OFF Switch



Zero-crossing Protection



(MM)

Smart Switch

Line only Standard
Line only High Power



Minimum wattage
5w
Switch's Circuit

1 GANG



2 GANG



Voice Control



Group Control



App Remote Control



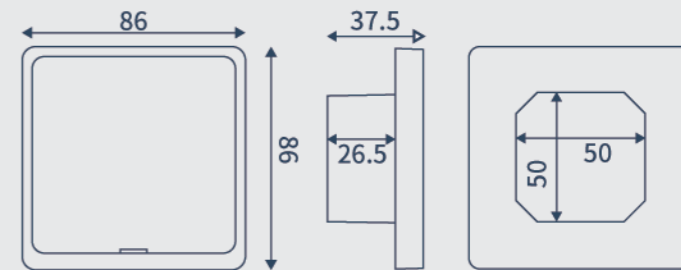
Dual Color Indicate LED



Mechanical ON/OFF Switch

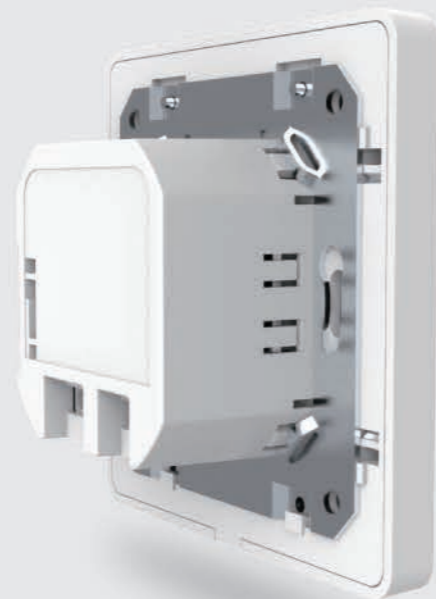


Zero-crossing Protection



(MM)

Touch Dimmer Switch



Voice Control



Group Control



App Remote Control



Stepless Touch Control



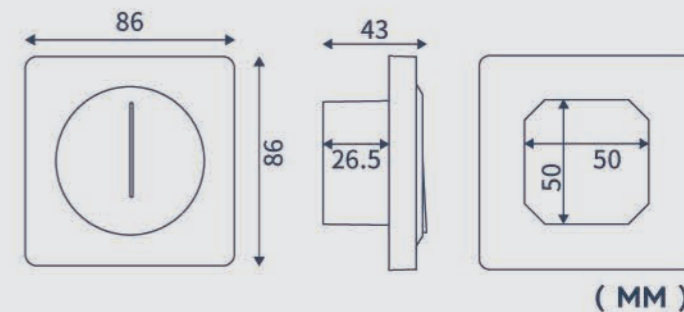
Mechanical ON/OFF Switch



Soft ON/OFF



Neutral Required
(3 Wires)



Rotary Dimmer Switch



Minimum wattage

3w

Dimmer's Circuit



Neutral Required
(3 Wires)



Voice Control



Group Control



App Remote Control



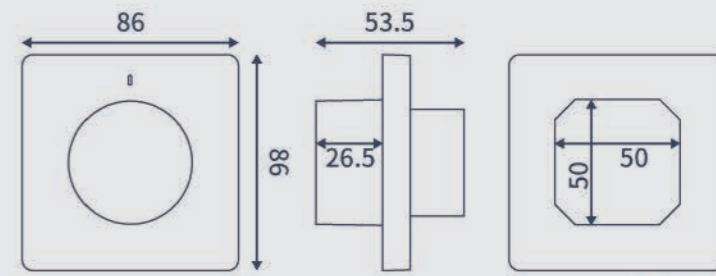
Stepless Rotate Control



Mechanical ON/OFF Switch



Soft ON/OFF



(MM)

Curtain Switch

WiFi zigbee Bluetooth

Smart Curtain



Voice Control



Group Control



App Remote Control



Dual Color Indicate LED



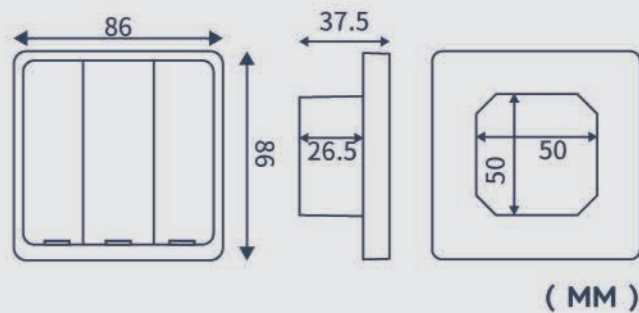
Mechanical ON/OFF Switch



Zero-crossing Protection



Neutral Required
(3 Wires)



Fan-Speed Controller



Motor Load
120W
Max



Neutral Required
(3 Wires)



Voice Control



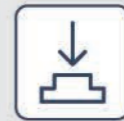
Group Control



App Remote Control



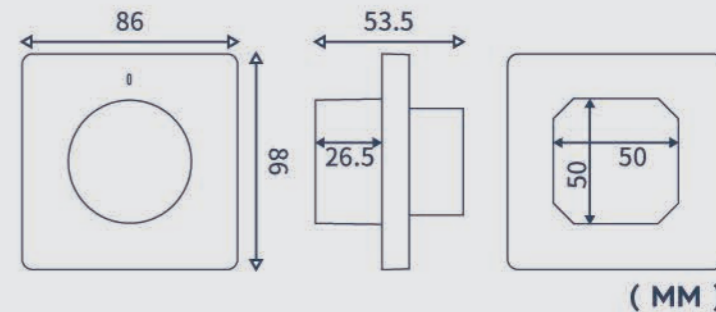
Stepless Rotate Control



Mechanical ON/OFF Switch



Fan Speed Control



US



US Standard



 Neutral Required
(3 Wires)



Smart Dimmer Switch

 **WiFi**
 **zigbee**
 **Bluetooth**



Voice Control



Group Control



App Remote Control



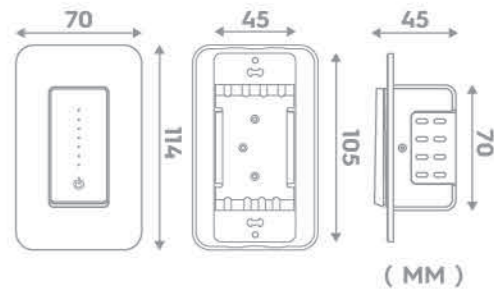
Touch Dimming PLUS



Mechanical ON/OFF Switch



Brightness Memory



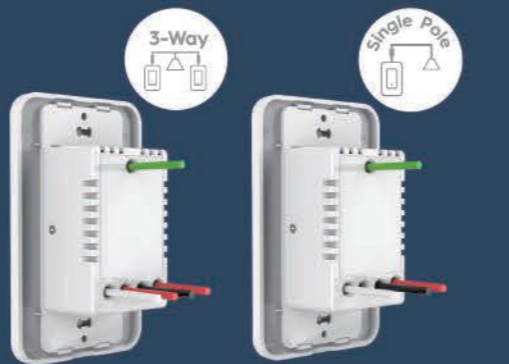
 Neutral Required
(3 Wires)



Smart Switch

Compatibility upgrades with traditional switches

 **WiFi**
 **zigbee**
 **Bluetooth**



Voice Control



Group Control



App Remote Control



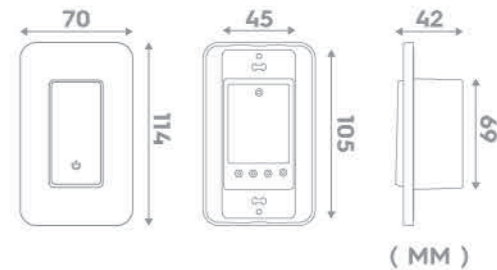
LED Indicator



Mechanical ON/OFF Switch



Schedule





Without Neutral
(2 Wires)



Smart Switch

Minimum wattage

7w

Switch's Circuit

WiFi



Single Pole



Voice Control



Group Control



App Remote
Control



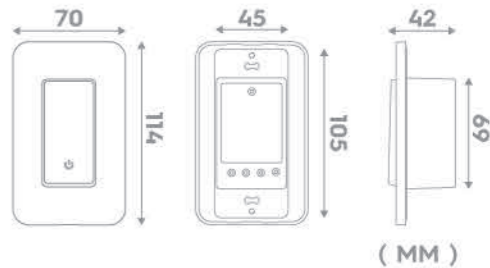
NO Gateway
Needed



Mechanical
ON/OFF Switch



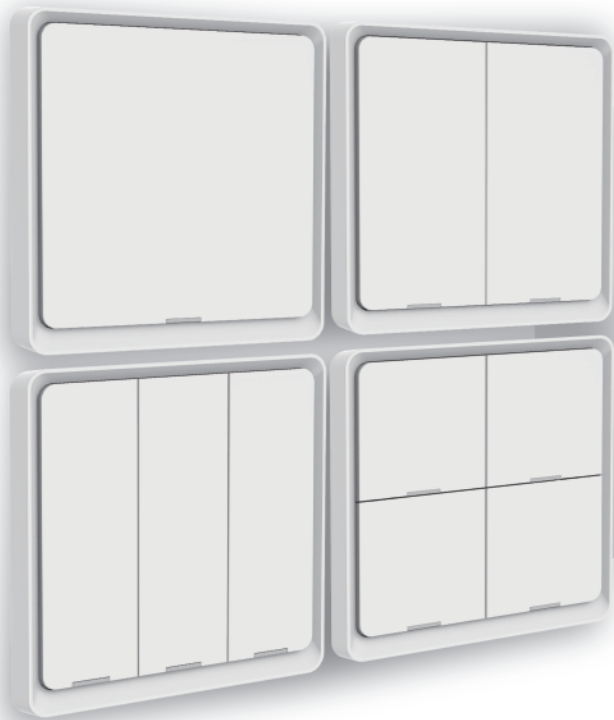
Schedule



CN

CN Standard





Smart Switch



WiFi zigbee Bluetooth



Voice Control



Group Control



App Remote Control



Dual Color Indicate LED



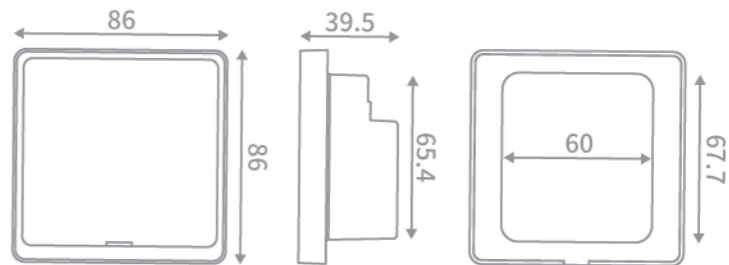
Mechanical ON/OFF Switch



Zero-crossing Protection



Neutral Required
(3 Wires)



(MM)



Minimum wattage
5w
Switch's Circuit

Smart Switch



Line only Standard
Line only High Power

zigbee Bluetooth



Voice Control



Group Control



App Remote Control



Dual Color Indicate LED

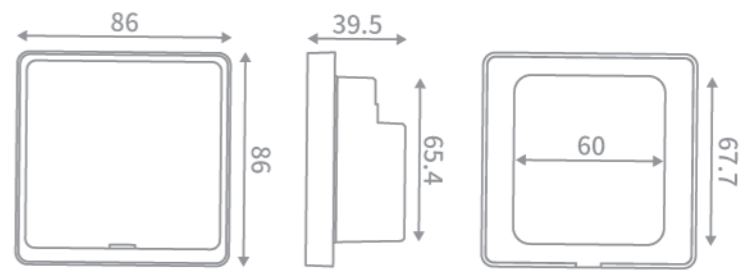


Mechanical ON/OFF Switch



Zero-crossing Protection

Without Neutral
(2 Wires)



(MM)

Universal





Scene Switch

 zigbee

 Bluetooth



Group Control



App Remote Control



Scene Setting



Mechanical ON/OFF Switch



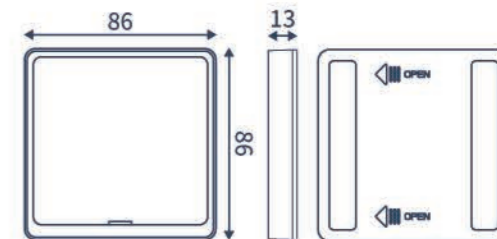
No Wiring



Stick Anywhere



Battery Powered



(MM)



Smart Button

 zigbee  Bluetooth



Group Control



App Remote Control



Scene Setting



Mechanical ON/OFF Switch



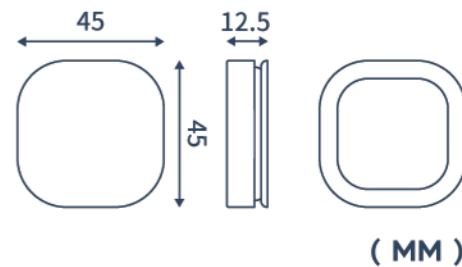
No Wiring



Stick Anywhere



Battery Powered





Smart Breaker

1/2 Gang Universal



Voice Control



Group Control



App Remote Control



Compatible with EU/US/CN-standard In-wall boxes



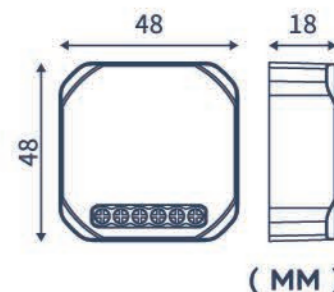
Intelligent switch or Socket

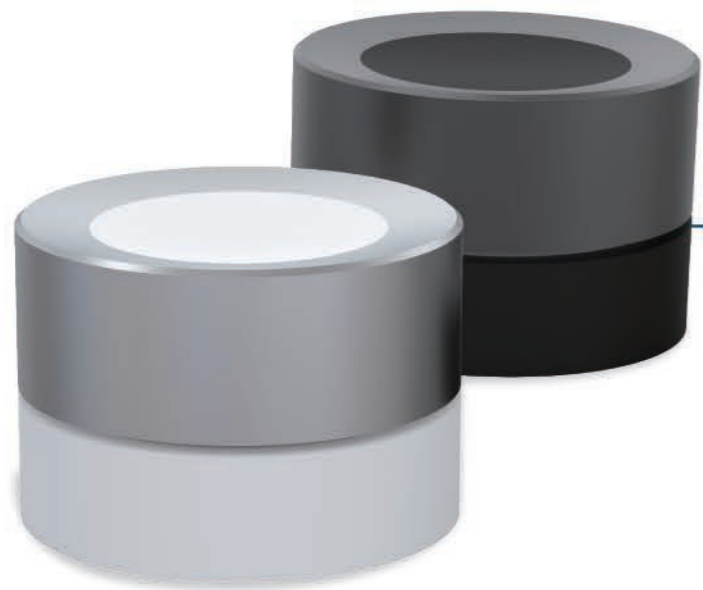


Zero-crossing Protection



Neutral Required
(3 Wires)





Smart knob



No Wiring



Light control



Curtain control



Stepless Rotate Control



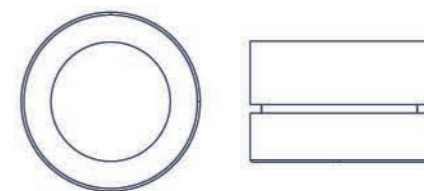
Temperature control



Fan control



Battery Powered





Smart Switch

1 GANG



Smart Switch

2 GANG



Smart Switch

3 GANG

Neutral Required - Single Pole - WiFi Zigbee BEL Mesh

1 GANG 2 GANG 3 GANG



Input Power:	100-240V AC 50/60Hz
load:	Incandescent: 1500W MAX CFL: 600W MAX LED: 600W MAX
Communication: (Available for selected model)	WiFi 2.4G Zigbee 3.0* BLE MESH**
Standby Power:	≤0.5W
Working Temperature	-10°C ~ 45°C
Working Humidity	<90%RH
Life Cycle:	50,000 times
Dimension:	86*86*37.5mm

Single Pole - Without Neutral - Zigbee BEL Mesh 1 GANG 2 GANG

Line only Standard	
Input Power:	200-240V AC 50/60Hz
load:	Incandescent: 5-400W LED: 5-300W
Communication: (Available for selected model)	Zigbee 3.0* BLE MESH**
Standby Power:	≤0.5W
Working Temperature	-10°C ~ 45°C
Working Humidity	<90%RH
Life Cycle:	50,000 times
Dimension:	86*86*37.5mm

Line only High Power	
Input Power:	200-240V AC 50/60Hz
load:	Incandescent: 5-280W
Communication: (Available for selected model)	Zigbee 3.0* BLE MESH**
Standby Power:	≤0.5W
Working Temperature	-10°C ~ 45°C
Working Humidity	<90%RH
Life Cycle:	50,000 times
Dimension:	86*86*37.5mm

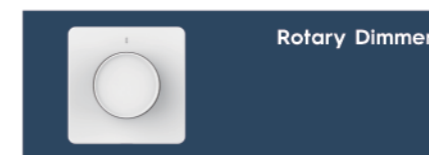


Touch Dimmer

Neutral Required - Single Pole - WiFi Zigbee BEL Mesh



Input Power :	100-240V AC 50/60Hz
Dimming Control :	Trailing Edge Cut
Inductive load (LED/CFL) :	< 220W
Resistive load (Incandescent) :	< 300W
Communication :	WiFi 802.11 b/g/n 2.4GHz Zigbee 3.0* BLE MESH 2.4GHz**
(Available for selected model)	
Control Channel :	1 CH
Standby Power :	≤0.5W
Working Temperature	-10°C ~ 45°C
Working Humidity	<90%
Life Cycle:	50,000 times
Dimension :	86*86*43mm

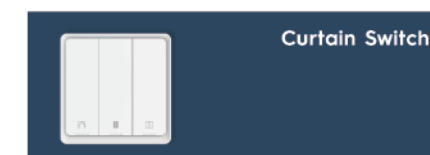


Rotary Dimmer

Neutral Required - Single Pole - WiFi Zigbee BEL Mesh



Input Power :	100-240V AC 50/60Hz
Dimming Control :	Trailing Edge Cut
Inductive load (LED/CFL) :	< 220W
Resistive load (Incandescent) :	< 300W
Communication :	WiFi 802.11 b/g/n 2.4GHz Zigbee 3.0* BLE MESH 2.4GHz**
(Available for selected model)	
Control Channel :	1 CH
Standby Power :	≤0.5W
Working Temperature	-10°C ~ 45°C
Working Humidity	<90%
Life Cycle:	50,000 times
Dimension :	86*86*53.5mm



Curtain Switch

Neutral Required - Single Pole - WiFi Zigbee BLE Mesh



Input Power:	100-240 AC 50/60Hz
load:	400W
Communication:	WiFi 802.11 b/g/n 2.4GHz Zigbee 3.0 BLE MESH**
(Available for selected model)	
Standby Power:	<1.5W
Working Temperature	-10°C ~ 45°C
Working Humidity	<90%
Life Cycle:	50,000 times
Dimension:	86*86*37.5mm



Smart Switch

Neutral Required - Single Pole & 3WAY - Zigbee WiFi BEL Mesh



Input Power:	100-120V AC 60Hz
Control:	Relay
Communication:	WiFi 802.11 b/g/n 2.4GHz
(Available for selected model)	Zigbee 3.0*
	BLE MESH 2.4GHz**
Max Current:	10A
Standby Power:	≤0.5W
Life Cycle:	50,000 times
Dimension:	105*45*42.5 mm

Single Pole - Without Neutral - WIFI

Input Power:	100-120V AC 60Hz
Control:	Relay
Communication:	WiFi 802.11 b/g/n 2.4GHz
Max Current:	10A
Standby Power:	≤0.5W
Life Cycle:	50,000 times
Dimension:	105*45*42.5 mm



Smart Dimmer Switch

Neutral Required - Single Pole & 3WAY - Zigbee WiFi BEL Mesh



Input Power:	100-120V AC 60Hz
Dimming Control:	Trailing Edge Cut
Communication:	WiFi 802.11 b/g/n 2.4GHz
(Available for selected model)	Zigbee 3.0*
	BLE MESH 2.4GHz**
Load:	< 430W Incandescent/Halogen
	< 250W LED
Standby Power:	≤0.5W
Life Cycle:	50,000 times
Dimension:	105*45*45 mm



Smart Switch

1 GANG



Smart Switch

2 GANG



Smart Switch

3 GANG



Smart Switch

4 GANG

Neutral Required - Single Pole - WIFI Zigbee BEL Mesh



Input Power:	200-240V AC 50/60Hz
load:	Incandescent: 1500W MAX
	CFL: 600W MAX
	LED: 600W MAX
Communication:	WiFi 2.4G
(Available for selected model)	Zigbee 3.0*
	BLE MESH**
Standby Power:	≤0.5W
Working Temperature	-10°C~45°C
Working Humidity	<90%RH
Life Cycle:	50,000 times
Dimension:	86*86*39.5mm

Without Neutral - Single Pole - Zigbee BEL Mesh

	1 GANG	2 GANG	3 GANG
Line only Standard	Line only High Power		
Input Power:	200-240V AC 50/60Hz	200-240V AC 50/60Hz	
load:	LED: 5-220W	Incandescent: 5-280W	
	CFL: 5-120W		
	Incandescent: 5-4,00W		
Communication:	Zigbee 3.0*	Zigbee 3.0*	
(Available for selected model)	BLE MESH**	BLE MESH**	
Standby Power:	≤0.5W	≤0.5W	
Working Temperature	-10°C ~ 45°C	-10°C ~ 45°C	
Working Humidity	<90%RH	<90%RH	
Life Cycle:	50,000 times	50,000 times	
Dimension:	86*86*39.5mm	86*86*39.5mm	

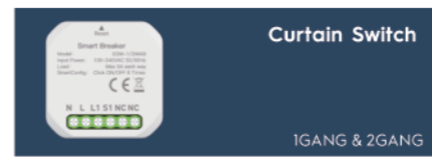
Universal



Battery - Zigbee BLE Mesh

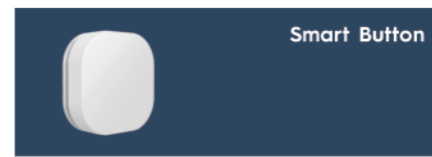


Battery:	CR2430 3V DC
Communication:	ZigBee 3.0 / BLE MESH
Working Range:	25m open area
Working Temperature:	-10°C-45°C
Working Humidity:	<90%RH
Battery Life:	50,000 times
Dimension:	86*86*13mm



Neutral Required - Single Pole - WiFi BLE Mesh

Model:	ESW-1/2WAB
Input Power:	100-240VAC 50/60Hz
Load:	Max 5A each way
Communication:	WiFi 2.4G
(Available for selected model)	BLE Mesh
	Zigbee 3.0
Life Cycle:	50,000 times
Environment:	-10°C ~ 40°C
Dimension:	48*48*18mm



Battery - Zigbee

Battery:	CR2430 3V DC
Communication:	ZigBee 3.0
Working Range:	25m open area
Working Temperature:	-10°C-45°C
Working Humidity:	<90%RH
Battery Life:	50,000 times
Dimension:	45*45*12.5mm



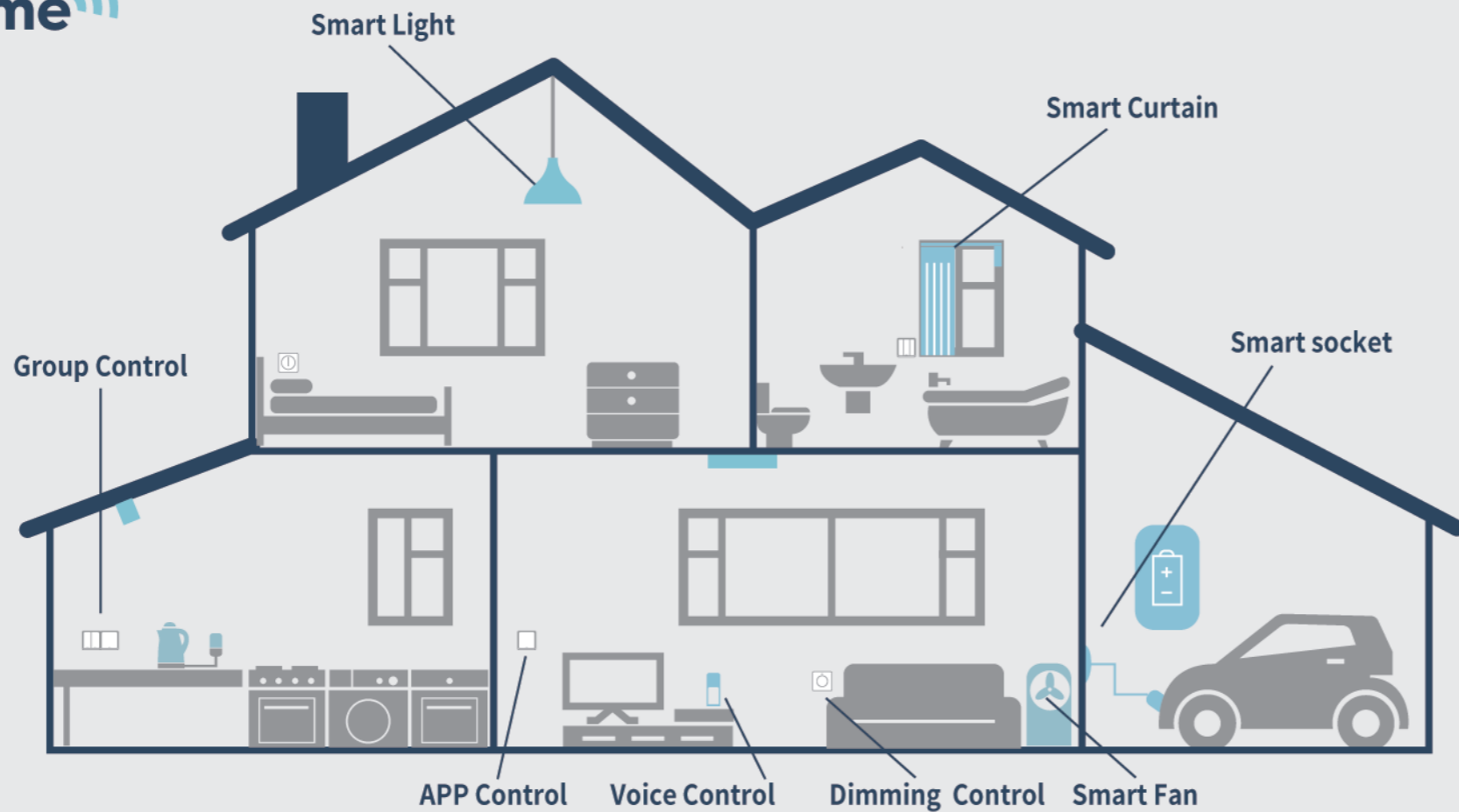
Battery - Zigbee



Battery:	CR2430 3V DC
Communication:	ZigBee 3.0
Working Range:	25m open area
Working Temperature:	-10°C-45°C
Working Humidity:	<90%RH
Battery Life:	50,000 times
Dimension:	—

Universal

Smart Home



Alexa! Turn on the Lights.

OK .

Alexa! Turn on door fan.



Hey
Google



WORKS WITH
alexa

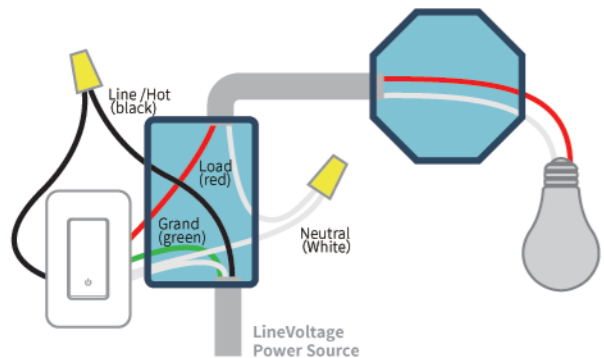


Home Automation Tips

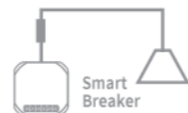
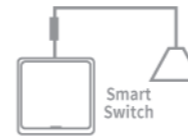
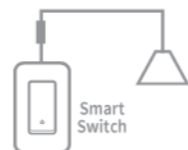
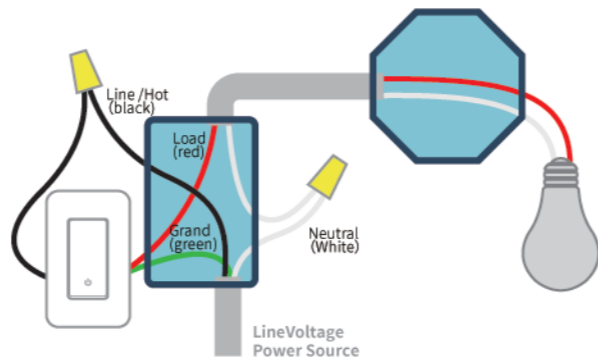


Smart Switch Connection Diagram TIPS

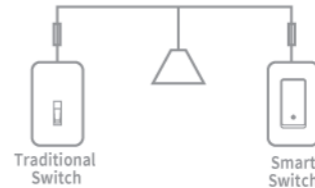
What is Neutral Required Wire?



What is without Neutral Wire?



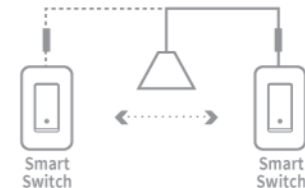
Single Pole



3-Way Wiring Diagram
(Smart Switch
& Traditional Switch)



3 Way Wiring Diagram
(Smart Switch
& Smart Switch)

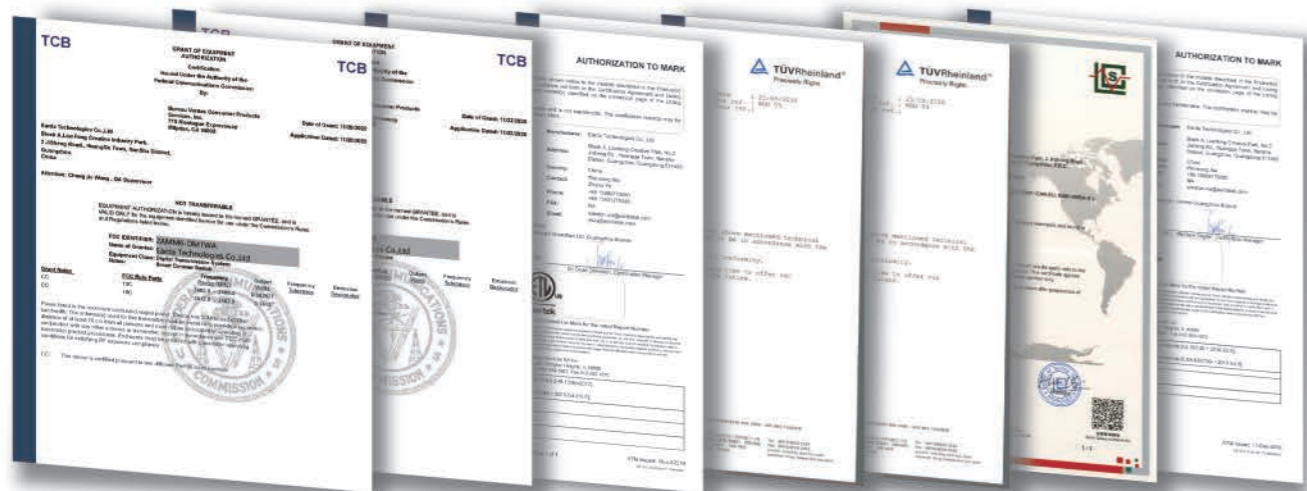


3 Way Wireless Control
(Smart Switch
& Smart Switch)



Authoritative authentication

Multiple authoritative authentication, Available access to global market.



EARDATEK
Stock Code: 870780

